

# East African Journal of Environment and Natural Resources

[eajenr.eanso.org](http://eajenr.eanso.org)

Volume 6, Issue 1, 2023

Print ISSN: 2707-4234 | Online ISSN: 2707-4242

Title DOI: <https://doi.org/10.37284/2707-4242>

**EANSO**

EAST AFRICAN  
NATURE &  
SCIENCE  
ORGANIZATION

Original Article

## Comparative Study of the Diametric and Spatial Structures of *Guarea cedrata* (A. Chev.) Pellegr. (Meliaceae) in the Semi-Caducified Forests of the Central Basin Forest Massif (Tshopo Province, DRC, Congo Basin)

Roger Katusi Lomalisa<sup>1</sup>, Hyppolyte Nshimba Seya Wa Malale<sup>1</sup>, Joackim Likaka Maunda-Simba<sup>2</sup>, Marie Fundiko Cakupewa<sup>3</sup>, Josué Aruna Sefu<sup>4</sup>, Assumani Zabo Idrissa<sup>5</sup> & Jean De Dieu Mangambu Mokoso<sup>3\*</sup>

<sup>1</sup> Université de Kisangani, Kisangani, Tshopo/DRC.

<sup>2</sup> Institut Supérieur des Techniques Médicales de Basoko, Basoko, Tshopo/DRC.

<sup>3</sup> Université Officielle de Bukavu, Bukavu, Sud-Kivu/DR Congo.

<sup>4</sup> Institut Supérieur de Développement Rural de Kindu, Kindu Maniema/DRC.

<sup>5</sup> National Pedagogical University, Kinshasa, DR Congo.

\* Correspondence email: [mangambujd@gmail.com](mailto:mangambujd@gmail.com)

Article DOI: <https://doi.org/10.37284/eajenr.6.1.1324>

Date Published: **ABSTRACT**

16 July 2023

**Keywords:**

*Guarea  
Cedrata,  
Diametric and  
Spatial  
Structure,  
Tshopo,  
DR Congo*

The comparative study of the diametric and spatial structures of *Guarea cedrata* (A. Chev.) Pellegr. was carried out in the semi-caducified forests of the Tshopo forest massif in the Democratic Republic of the Congo. For this study, two forest reserves were selected: the Yoko Forest Reserve and the Yangambi Biosphere Reserve, successively located in the Ubundu territory, 32 km southeast of Kisangani and in the Isangi territory, 100 km west of the same city. To conduct the present study, two devices of 200 hectares each, were installed, one in Yoko and the other in Yangambi where all the individuals of *Guarea cedrata* with  $d_{hp} \geq 10$  cm were measured including their X, Y coordinates. A total of 177 individuals were inventoried within two reserves including 72 individuals, or 0.36 feet/ha in Yoko, and 105 individuals, or 0.525 feet/ha in Yangambi. The total basal area values are respectively 0.0695 m<sup>2</sup>/ha in Yoko and 0.1712 m<sup>2</sup>/ha in Yangambi. Both diametric structures are "stretched S" and the spatial distribution is aggregative in Yoko, while random in Yangambi. In general, perch positions and stands are independent from each other; however, there is some dependence at small scale of analysis within the two reserves.

### APA CITATION

Lomalisa, R. K., Wa Malale, H. N. S., Maunda-Simba, J. L., Cakupewa, M. F., Sefu, J. A., Idrissa, A. Z. & Mokoso, J. D. M. (2023). Comparative Study of the Diametric and Spatial Structures of *Guarea cedrata* (A. Chev.) Pellegr. (Meliaceae) in the Semi-Caducified Forests of the Central Basin Forest Massif (Tshopo Province, DRC, Congo Basin). *East African Journal of Environment and Natural Resources*, 6(1), 217-231. <https://doi.org/10.37284/eajenr.6.1.1324>.

### CHICAGO CITATION

Lomalisa, Roger Katusi, Hyppolyte Nshimba Seya Wa Malale, Joackim Likaka Maunda-Simba, Marie Fundiko Cakupewa, Josué Aruna Sefu, Assumani Zabo Idrissa and Jean De Dieu Mangambu Mokoso. 2023. "Comparative Study of the Diametric and Spatial Structures of *Guarea cedrata* (A. Chev.) Pellegr. (Meliaceae) in the Semi-Caducified Forests of the Central Basin Forest Massif (Tshopo Province, DRC, Congo Basin)". *East African Journal of Environment and Natural Resources* 6 (1), 217-231. <https://doi.org/10.37284/eajenr.6.1.1324>.

**HARVARD CITATION**

Lomalisa, R. K., Wa Malale, H. N. S., Maunda-Simba, J. L., Cakupewa, M. F., Sefu, J. A., Idrissa, A. Z. & Mokoso, J. D. M. (2023) "Comparative Study of the Diametric and Spatial Structures of *Guarea cedrata* (A. Chev.) Pellegr. (Meliaceae) in the Semi-Caducified Forests of the Central Basin Forest Massif (Tshopo Province, DRC, Congo Basin)", *East African Journal of Environment and Natural Resources*, 6 (1), pp. 217-231. doi: 10.37284/eajenr.6.1.1324.

**IEEE CITATION**

R. K., Lomalisa, H. N. S., Wa Malale, J. L., Maunda-Simba, M. F., Cakupewa, J. A., Sefu, A. Z., Idrissa & J. D. M., Mokoso. "Comparative Study of the Diametric and Spatial Structures of *Guarea cedrata* (A. Chev.) Pellegr. (Meliaceae) in the Semi-Caducified Forests of the Central Basin Forest Massif (Tshopo Province, DRC, Congo Basin)", *EAJENR*, vol. 6, no. 1, pp. 217-231, Jul. 2023.

**MLA CITATION**

Lomalisa, Roger Katusi, Hyppolyte Nshimba Seya Wa Malale, Joackim Likaka Maunda-Simba, Marie Fundiko Cakupewa, Josué Aruna Sefu, Assumani Zabo Idrissa & Jean De Dieu Mangambu Mokoso. "Comparative Study of the Diametric and Spatial Structures of *Guarea cedrata* (A. Chev.) Pellegr. (Meliaceae) in the Semi-Caducified Forests of the Central Basin Forest Massif (Tshopo Province, DRC, Congo Basin)". *East African Journal of Environment and Natural Resources*, Vol. 6, no. 1, Jul 2023, pp. 217-231, doi:10.37284/eajenr.6.1.1324.

**INTRODUCTION**

African forest ecosystems, especially those of the central basin, are subject to various anthropogenic disturbances. The economy of this basin also depends on agriculture and logging, which leads to the destruction of more than 50% of forest areas (Mangambu, 2002; Achard & Blasco, 2010; Achard et al., 2012; Dibi et al., 2018; Katusi et al. 2022a).

Protected areas such as national parks, reserves, and classified forests, set up for sustainable management of natural resources, are not exempted from these threats. Among the Congolese classified forests, those of the Yangambi Biosphere and the Yoko Forest reserve have been subjected, for several years, not only to the exploitation of timber, but also and above all, to the illicit and continuous removal of various forest resources by local residents for their daily needs, compromising the conservation. Therefore, forest inventories are one of the most important sources of data to study phytodiversity, the establishment of a management plan, and conservation (Lomba, 2011; Katusi et al., 2022a).

In the Tshopo forest massif, the diametric structure of trees, the actual density of woody species, and their natural regeneration, have not yet been fully explored (Katusi et al., 2022b). The comparative study of the diametric and spatial structures of *Guarea cedrata* (A. Chev.) Pellegr. was carried out in the semi-caducified forests of the Tshopo forest massif in the Democratic Republic of Congo (Mangambu, 2002; Katusi et

al., 2022a). In the current context of development and sustainable management of natural forest ecosystems in the Kisangani region of Tshopo province, such investigation is necessary.

Therefore, the diametric structure of various forest species sheds light on their regeneration and one can establish for a given species, the diagram of the number of individuals of different diameter classes in order to have an idea on its impact on the forest to ensure a good management (Schnell, 1971; Katusi et al., 2022c). In the Democratic Republic of the Congo, structures of tree population generally are very little known, and especially as several timber companies do not exploit these timbers based on ecological data of species with high market value (Boyemba, 2011; Katusi, 2015; Adeito et al., 2018; Katusi et al., 2022b).

In tropical forests, most studies on spatial distributions of trees show the predominance of aggregated distributions (Hubbell, 1979; Collinet, 1997; He et al., 1997; Condit et al., 2000; Mangambu, 2002; Traissac, 2005; Boyemba, 2011; Lomba; 2011; Menga, 2011; Katusi, 2015; Adeito et al., 2018). But, for many species, these distributions cannot be interpreted from the characteristics of their ecology (soil structures, diaspora projection distances etc.) (Collinet, 1997; Boyemba, 2011; Katusi, 2015), but seem to be related to the interaction results of many mechanisms (He et al, 1997). It should also be well stated that there are relationships between the spatial distribution of trees and certain

environmental factors, such as light, fertility, and topographic features (Gartlan et al., 1986; Newbery et al., 1986; Baillie et al. 1987; Ashton et al. 2005; Chen et al. 1997; Hubbell et al. 1999; Harms et al. 2001; Hall et al. 2004; Traissac 2005; Jones et al. 2006).

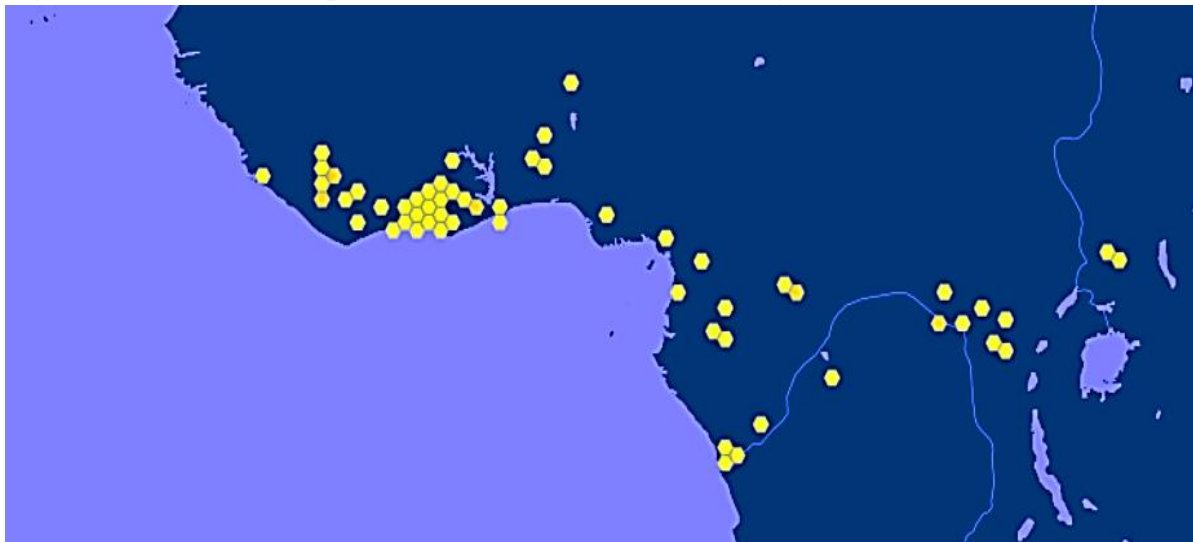
The present study focuses on the demography, diametric structure, and the dispersal of *Guarea cedrata* individuals as well as the interactions between different categories of trees that compose it. *Guarea cedrata* belongs to the subfamily of Melioideae, tribe Guareeae, and appears to be closely related to *Turraeanthus*, which is distinguished by its petals fused to the staminal tube, occurring from Sierra Leone to Uganda, and southward to Gabon and the D.R. Congo (Wilks & Issembe, 2000).

In the field, new leaf shoots are pinkish red in color. Ripe fruits often form at the beginning of the dry season. Seed dissemination is by birds (e.g., hornbills), monkeys, duikers, and porcupines, which feed on the fleshy seed coat

(Siepel et al, 2004; De la Mensbrugge, 2017, Dibi et al., 2018).

The heartwood is pale pinkish brown at the time of cutting, darkening on exposure to become reddish brown. The minimum exploitable diameter (MED) is 60 cm in Côte d'Ivoire and R.D Congo, 70 cm in Central Africa, and 80 cm in Cameroon and Liberia (CIRAD, 2018). *Guarea cedrata* is valued in home construction, flooring, joinery, interior woodwork, panels, window frames, doors, shipbuilding, vehicle frames, furniture manufacture, cabinetry, decorative boxes, crates, veneers, and plywood (Jiofack-Tafokou, 2018). The decoction or maceration of the bark is taken against stomach aches, food poisoning, and gonorrhoea, and as a lotion for kidney pain, postpartum haemorrhage, rheumatism, and leprosy (Neuwinger, 2018). The species is sometimes spared during forest clearing for its use as a shade tree in coffee and cocoa plantations, for example in Cameroon (Hawthorne & Jongkind, 2016).

**Figure 1: Distribution map of *Guarea cedrata* (A. Chev.) Pellegr. (Meliaceae)**



Source : <https://www.gbif.org/fr/species/8252209>

During the course of the study, various questions were addressed, including: (i) are the diametric structures of *G. cedrata* individuals the same within two reserves? Are the individuals of this species spatially distributed in the same way within these reserves? And finally, are the

positions of the poles dependent on those of the stands within the reserves?

The specific objectives of this study are to characterize: (i) the diametric structures of *G. cedrata* individuals; (ii) their spatial distributions; and finally, (iii) to verify whether or not there is

dependence between the positions of the perches and the stands within two reserves.

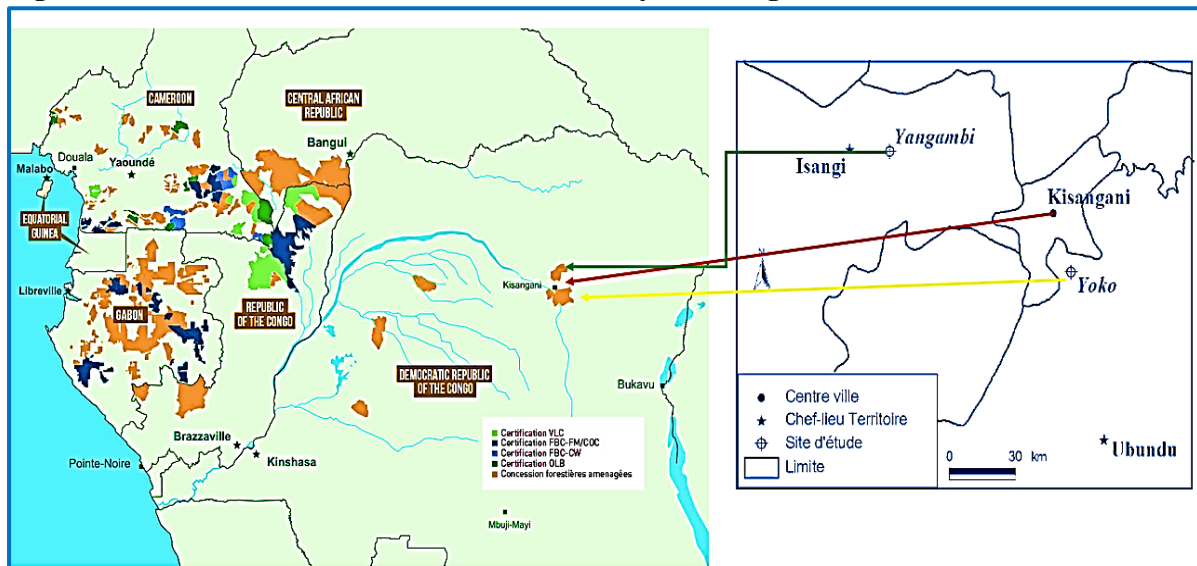
## MATERIALS AND METHODS

### Study Sites

The studies were conducted on two sites near Kisangani in one at Yangambi located in the territory of Isangi, 100 km west of the city, between 0° 38' and 1° 10' N, 24° 16' and 25° 08'

E, and the other at Yoko located in the Ubundu territory, 32 km southeast of Kisangani, between 0° 15' and 0° 20' N, 25° 14' and 25° 20' E (Boyemba, 2011; Katusi et al., 2021) (Figure 1). Located in the equatorial zone, both sites enjoy an equatorial climate with an average monthly temperature ranging from 22.4 to 29.3 °C, with an annual average near 25 °C, and annual rainfall ranging from 1500 to 2000 mm, with an average of 1750 mm (Mangambu, 2002).

**Figure 2: Location of two sites in relation to the city of Kisangani**



The tropical forest of the Congo Basin, also known as the "second green lung" of the planet, after the Amazon (<https://www.atibt.org/fr/media/35/cartographie-des-forets-tropicales-dans-le-bassin-du-congo>).

### The Survey

Two devices of two hundred hectares each were installed, one in Yangambi Biosphere Reserve and the other in Yoko Forest Reserve. All *G. cedrata* individuals with a dhp ≥ 10 cm at 1.30 m above ground were inventoried, and their x and y Cartesian coordinates were taken (Boyemba, 2011; Katusi, 2015; Adeito et al., 2018; Katusi et al., 2021).

$$L(r) = \sqrt{\frac{K(r)}{\pi} - r}$$

With K(r): Ripley function, r: radius of the aggregates and π: 3.14. Aggregate (L(r) > 0) and regular (L(r) < 0) processes, the curves lie above

and below the confidence envelope, respectively. For a random process (following a Poisson distribution), L(r) = 0 at all distances from r, and the L(r) curve remains within the confidence interval. The confidence interval is calculated at a 5% risk, from 100 simulations, by the Monte Carlo method (Pelissier & Goreaud, 2001). The analysis is made possible from mapped data of different stands of *Guarea cedrata* (diameter ≥ 10 cm) using Cartesian coordinates x, y

For the spatial dependence between perches and stands, the intertype method of Traissac (2005) was applied to analyse the relationships between individual categories. The hypothesis tested focuses on the independence of the two distributions. The principle is derived from Ripley's method (1977) and the calculation is based on the function K12fun of the package ads, using the software R version 2.5, according to the equation:

$$\hat{L}_{12}(r) = \sqrt{\frac{\hat{K}_{12}(r)}{\pi}} - r$$

Like  $K(r)$ , the function  $K_{1.2}(r)$  is interpreted by the function  $L_{1.2}(r)$  (Besag, 1977; Goreaud, 2000):  $L_{1.2}(r) = 0$  reflects independence between perches and stands (curve passes within the confidence envelope);  $L_{1.2}(r) > 0$  reflects attraction between perches and stands (curve passes above the confidence envelope) and conversely  $L_{1.2}(r) < 0$  corresponds to the "repulsion" between perches and stands (curve passes below the confidence envelope).

## RESULTS

### Density

Over the two sites, 105 individuals, or 0.525 feet/ha were counted at Yangambi (including 60 individuals from the perches, or 0.3 feet/ha: 0.185 ft/ha for perch 1 and 0.115 ft/ha for perch 2 and 45 trees or 0.23 ft/ha) and 72 individuals, or 0.36 ft/ha at Yoko (54 perch individuals, or 0.27 ft/ha: 0.18 ft/ha for perch 1 and 0.09 for perch 2 and 18 trees, or 0.09 ft/ha) (Table 1). Using the Chi-square test to compare the density of different tree categories within two reserves, there is a significant difference ( $\chi^2 = 136$ ;  $df = 2$ ,  $p\text{-value} = 0.04 < 0.05$ ).

**Table 1: Population densities of *Guarea cedrata***

Sites	Area (ha)	dhp	Workforce	Density (N ind./ha)
Yangambi	200	10 cm ≤ dhp < 30 cm	37	0,185
		30 cm ≤ dhp < 60 cm	23	0,115
		dhp ≥ 60 cm	45	0,225
		Total	105	0,525
Yoko	200	10 cm ≤ dhp < 30 cm	36	0,180
		30 cm ≤ dhp < 60 cm	18	0,09
		dhp ≥ 60 cm	18	0,09
		Total	72	0,36

*perch1 (10 cm ≤ dhp < 30 cm); perch 2 (30 cm ≤ dhp < 60 cm) and futa? (dhp ≥ 60 cm) on the study sites; dhp (diameter at breast height); N ind = number of individuals, and ha: hectare.*

From Table 1, it can be observed that the density of trees is almost 1.5 times higher in Yangambi than in Yoko.

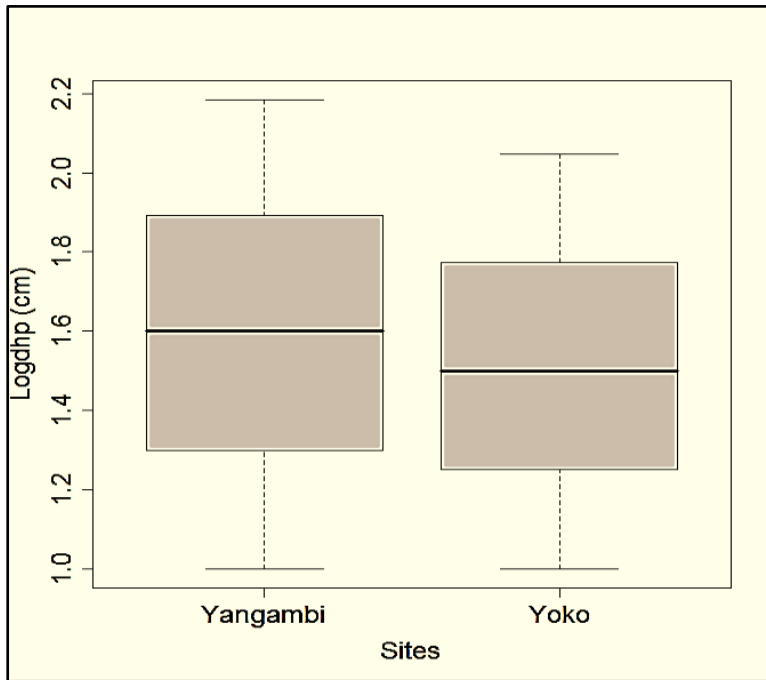
### Tree Diameter

Large diameter individuals are more observed in Yangambi than in Yoko. The highest extreme values of the dhp are 152.9 cm in Yangambi, and 111.5 cm in Yoko. The minimum values are 10.3 cm in Yangambi and 10 cm in Yoko respectively. Across the two sites, Figure 3 shows that 50% of *G. cedrata* individuals have dhp varying between 32 and 80 cm in Yangambi, and from 20 and 50 cm in Yoko. Applying the Wilcoxon test (W) to

compare the mean diameters of *G. cedrata* individuals within two reserves, a highly significant difference (Wilcoxon:  $W = 4658.5$ ;  $p = 0.009 < 0.01$ ) is observed (see Figure 3).

The box represents the interval in which 50% of the basal areas are clustered and the thick bar inside the box indicates the median basal area; the bar below indicates the minimum basal area, while the bar above indicates the maximum basal area. The point underneath represents the extreme upper value in relation to the mean basal area and is not taken into account.

**Figure 3: Dispersion of basal area values of *Guarea cedrata* individuals in different diameter classes**

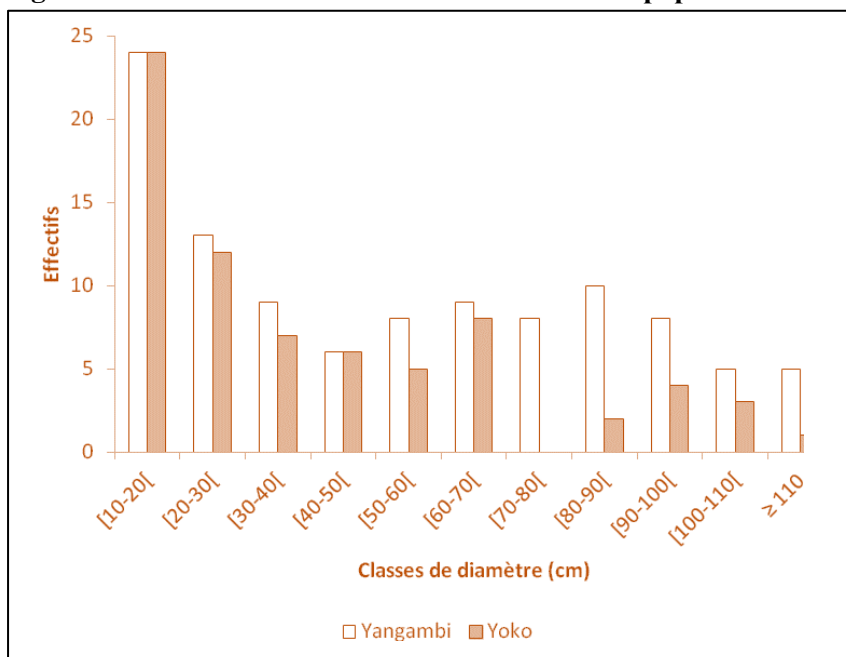


**Diametric Structure**

Both diametric structures are in a stretched "S" pattern, with the number of individuals decreasing to the [40-50[ cm class with a first bump at the [50-60[ cm class, and a second bump at the [80-90[ cm class, and then decreasing thereafter at the Yangambi site. On the Yoko site, it decreases to the [50-60[ cm class with a first bump at the [60-

70[ cm level and a second bump at the [90-100[ cm level, and then decreases thereafter (Figure 4). To meet the requirements of the Chi-square ( $\chi^2$ ) test, individuals were grouped into 7 diameter classes instead of 11 classes. Applying the Chi-square ( $\chi^2$ ) test to compare the two diametric structures, there was observed no significant difference within two reserves ( $\chi^2 = 9.9$ ;  $p = 0.013 > 0.05$ ) in the two sites (See Figure 4).

**Figure 4: Diametric distribution of *Guarea cedrata* populations at dhp  $\geq$  10 cm.**



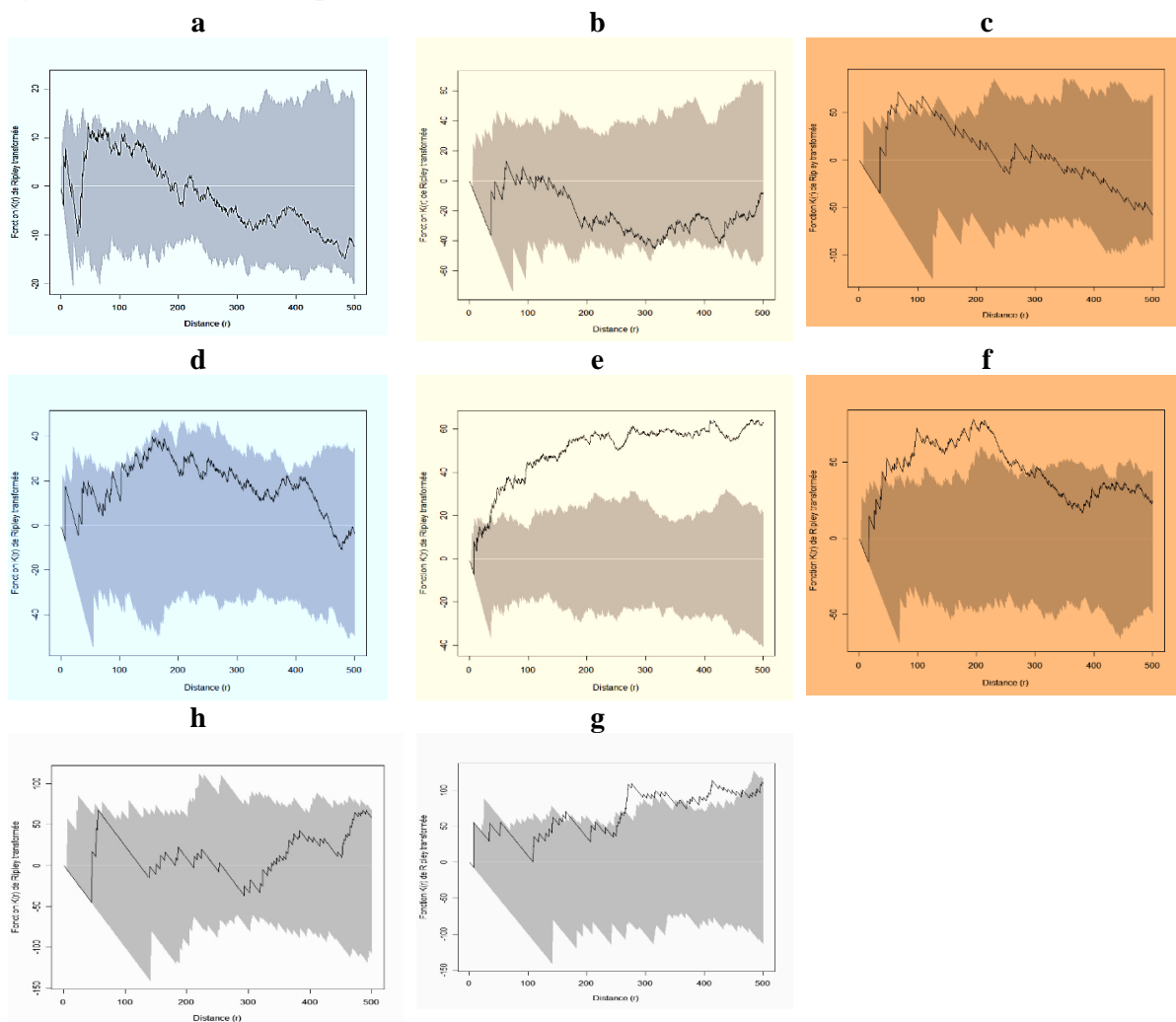
**Spatial Characterization of Perches and Stands (Ripley's K (r) function)**

The spatial distribution of all *G. cedrata* individuals at  $dhp \geq 10$  cm shows a random distribution at Yangambi (Figure 5a) while at Yoko, it is random from 0 to 50 m of analysed distance and then, aggregated beyond 50 m of analysed distance ( $K(r) > 25$  m; Figure 5e).

When categorizing individuals, perch1 are significantly random throughout the analysis distance at Yangambi (Figure 5b) while at Yoko, they are random from 0 to 50 m and then 280 m to

500 m, and aggregated from 50 to 280 m of the analysis distance ( $K(r) > 50$  m; Figure 5f). The perches 2 are random from 0 to 70 m and then from 130 m to 500 m while aggregated from 70 to 130 m of the analysis distance ( $K(r) > 50$  m; Figure 5c) at Yangambi while at Yoko they are significantly random (Figure 5g). On the other hand, stands are significantly random in Yangambi (Figure 5d) while in Yoko, are random from 0 to 170 m and then from 190 to 280 m and finally, beyond 470 m and aggregated from 170 to 190 m and then from 280 to 470 m of the analysis distance ( $K(r) > 50$  m (Figure 5h).

**Figure 5: Transformed Ripley's K (r) function of *G. cedrata***



The K (r) curve shows a characteristic peak for a value of r approximately corresponding to the radius of the aggregates. The confidence interval of the null hypothesis (ash coloured) is calculated at the 5% risk of error, from 100 simulations, by the Monte Carlo method. The white line

represents the theoretical curve and the black line the observed values of the function (a; b; c and d for the site\_Yangambi and e; f; g and h for the site Yoko).

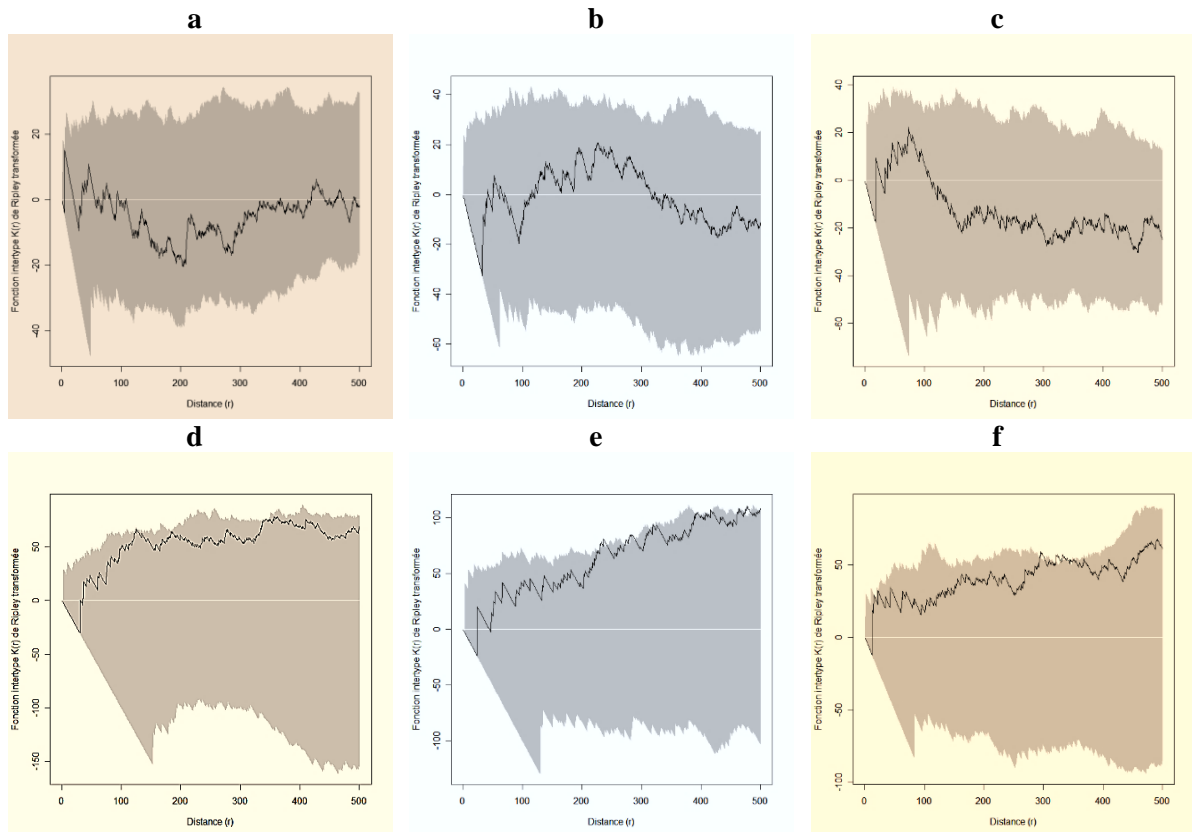
### Spatial Relationship Between Perches and Stands (Ripley's $K_{12}$ Function)

Under natural conditions in Yangambi, it can be observed that perches 1 are independent of the stands (*Figure 6a*) while in Yoko, we observe a tendency to attraction between 340 and 360 m radius, it is however difficult to conclude a significant dependence because the  $K_{12}(r)$  curve almost merges with the upper limit of the confidence interval (*Figure 6d*). Between the perches 2 and the stands, there is some repulsion between 0 and 50 m radius in Yangambi (*Figure 6b*), while in Yoko between 0 and 20 m radius (*Figure 6e*); however, in both sites, it is difficult to conclude a significant repulsion because the

$K_{12}(r)$  curves practically merge with the lower limit of the confidence interval.

But exceptionally, at Yoko, some attraction is observed between perch 2 and the forest stands at small analysis distances ranging from 240 to 250 m; 290 to 300 m and 470 to 485 m although the  $K_{12}(r)$  curve merges with the upper limit of the confidence interval. Finally, between perch 1 and perch 2, there is some repulsion from 0 to 40 m radius at Yangambi (*Figure 6c*) while at Yoko, some attraction between 280-290 m and then from 340 to 360 m radius (*Figure 6f*). *The theoretical curve, the curve in black or the observed values of the function (a; b; c and d for the Yangambi site and e; f; g and h for the Yoko site)*

**Figure 6: Intertype analysis of *Guarea cedrata* perch 1, perch 2, and groves in the inventory sites.**



The black curve represents the observed values of the  $K_{12}(r)$  index and the grey area represents the limits of the confidence interval of the null hypothesis (independence hypothesis) (a; b and c for Yangambi plot and e; f and g for Yoko plot).

### DISCUSSION

Several plant species are threatened by habitat transformation, overexploitation, introduction of invasive alien species, pollution, and climate change, and are in danger of extinction. The disappearance of so much significant biological diversity represents one of the greatest challenges



for the global community: to halt the depletion of plant diversity which is essential to meet present and future human needs.

The methodological approach applied to the present study has been evaluated as effective by several authors who addressed the same subject (Traissac, 2005; Picard, 2008). In addition to quantitative analyses including density, diametric structure and basal area, the methodological approach considered both the X and Y coordinates of each individual at  $dhp \geq 10$  cm. The approach therefore enabled the researcher to characterize the spatial distribution by Ripley's K(r) function on one side, and to appreciate the interactions between individuals of different categories (perch 1, perch 2 and futaies) through Ripley's K1.2 function on the other side.

### Demographic Analysis

*G. cedrata* species is fairly widespread, but only occurs in low densities and is usually restricted to undisturbed forest. The species is listed as Vulnerable(V) on the IUCN Red List due to habitat loss and degradation, as well as selective logging. In general, exploitation levels are moderate but *G. cedrata* sometimes suffers from its similarity to other commercial species such as *Entandrophragma angolense* (Welw.) C.DC (Adeito et al., 2018).

Inventories of individuals with  $dbh \geq 10$  cm on an area of 200 ha successively in Yangambi and Yoko showed that the density is 0.36 stems/ha in Yoko and 0.525 stems/ha, or an average of 0.45 stems/ha. It should be noted that large individuals of *G. cedrata* are present only at low densities in the forest. For example, in Liberia, densities of less than 1 to 16 boles of more than 60 cm in diameter per  $km^2$  have been observed. In some areas of Côte d'Ivoire, 1 harvestable tree per 12-16 ha was counted, and the average wood volume in Côte d'Ivoire forests is estimated to be 0.3  $m^3/ha$ . In southern Cameroon, the average density of *Guarea* spp. over 60 cm in diameter is 0.03-0.14 per ha. In Uganda, large individuals are uncommon, and in many areas, the individuals have become very rare (De La Mensbrughe, 2017).

These results corroborate the present study results on the demographic population of *G. cedrata* species in the forest massif around Kisangani.

By comparing present data with those of some exploited species from the 400 ha pre-inventory in Yoko (DRC) (Picard, 2008; Lomba, 2011), such as *Gilbertiodendron dewevrei* (5.69 stems/ha), *Prioria balsamifera* (3.0975 stems/ha), *Prioria oxyphylla* (2.6775 stems/ha), *Pterocarpus soyauxii* (0.9750 stems/ha) and *Pericopsis elata* (0, 58 stems/ha), it was observed that *G. cedrata* is less represented than *Pericopsis elata* which is classified among the most endangered species by CITES (Boyemba, 2011). In Africa, Debroux (1998) evaluated the density of *Entandrophragma cylindricum* (3 stems/ha); Doucet (2003) and highlighted that of *Aucoumea klaineana* (4.2 stems/ha) and *Paraberlinia bifoliolata* (5.2 stems/ha) and Menga (2011), *Millettia laurentii* (2.8 stems/ha). From all these results, *G. cedrata* is a vulnerable species which survival requires a rational and sustainable exploitation.

### Dendrometric Characterization

The only parameter used in the present study is the diameter taken at 1.30 m from the ground and not the different tree heights (bole height, butt height and crown height). The basal area is 0.0695  $m^2/ha$  in Yoko and 0.2407  $m^2/ha$  in Yangambi. From these different values, it has been observed that the individuals are on average larger in Yangambi than in Yoko. Indeed, these large diameters may be related to the early establishment of the stand in Yangambi (Forni, 1997). Similar results were observed by Menga et al. (2012) for the species *Millettia laurentii* in the Bandundu province of the Democratic Republic of the Congo.

As for the shape of the curve, individuals of *G. cedrata* show a "stretched S" structure within the two sites. This structure shows that the diametric distribution is balanced, i.e., we observe a decrease in numbers up to class 4, then a first hump with a peak at class 6, and a second hump with a peak at class 8 in the Yangambi site, while in the Yoko site, there is a drop in numbers up to class 5, then a first hump with a peak at class 6,

with no number at class 7 and a second hump with a peak at class 9.

The presence of humps in a decreasing structure could be due to the variations in growth rates and mortality rates from one class to another (Debroux, 1998) and, young stems are generally quite well represented. This may explain, depending on the circumstances of each forest, that the structure of *G. cedrata* individuals can shift from an exponential curve (favourable conditions) to a bell-shaped curve (unfavourable conditions) (Demarquez, 2000; Degueret, 2002; Gorbert, 2002; Doucet, 2003; Katusi, 2015). This type of structure is characteristic of species that are less demanding of light in young stages, but nevertheless, require better light conditions at some stage of their development to reach their mature stage (Hawthorn, 1995; Doucet et al., 1996; Traissac, 2005; Kouadio, 2008; Katusi, 2015). These patterns reflect a kind of transition between moderate heliophilic and moderate sciaphilic character (Demarquez, 2000; Degueret, 2002; Doucet, 2003; Katusi et al., 2022b).

In other words, the seedlings of the *G. cedrata* species prefer to settle in the undergrowth until their growth is inhibited by lack of light and, according to Oldeman and Van Dijk, (1991), the species *G. cedrata* could be described as "strugglers". Similar results have been observed in Cameroon for *Baillonella toxisperma* (Debroux, 1998); in Gabon for the species *Paraberlinia bifoliota* (Marc, 2000; Doucet, 2003), *Afzelia bipendensis*, *Berlinia bracteosa*, *Entandrophragma cylindricum*, *Hallea ledermannii*, *Khaya ivorensis*, *Prioria oxyphylla* and *Pterocarpus soyauxii* (Doucet, 2003) and in Paracou for *Qualea rosea* (Gourlet-Fleury, 2000).

### Spatial Characterization

The spread of diaspores partly influences the spatial distribution of several species Gautier-Hion et al, 1985; Cabrera & Gignoux, 1990; Loubry, 1993; 1994; Collinet, 1997; Menga, 2011), to their natural regeneration modality (Puig et al., 1989; Bariteau, 1993; Ribbens et al., 1994; Pascal, 1995; Boyemba, 2011), micro-

environmental conditions (Puig et al., 1989; Sabatien et al., 1997; Clark et al., 1998; Condit et al., 2000) and soil structures (Forget, 1988; Puig et al., 1989; Barthes, 1991; Boyemba 2011; Katusi, 2015) that are sometimes susceptible to large variations over short distances (Darrieu De Madron, 1989; Koukou, 1994; Katusi et al., 2022a).

In the present study, the spatial characterization of *Guarea* individuals is heterogeneous within the two study sites. It is significantly aggregated in Yoko, while random in Yangambi. This difference is thought to be related to the topography of the terrain, which is more rugged in Yoko than in Yangambi where almost the entire study area is on the plateau. Similar result was observed on *Millettia laurentii* (Menga, 2011) where the species is either aggregated in some plots; aggregated and random and significantly random in others. However, significantly heterogeneous aggregated spatial structure over a range including the maximum analysis distance (Figure 6e) was observed in species such as *Virola micheli*, *Discoryna guianensis* and *Qualea rosea* (Flores, 2005), *Pericopsis elata* (Picard 2008; Boyemba, 2011; Lomba, 2011).

### Individual Size Affects Repair and Spatial Interaction

Apart from the spatial distribution of all individuals with dhp  $\geq 10$  cm (Cf Figures 5a and 4e), the aggregation or not of species would be related to the size of the individuals that compose them. As a reminder, *Guarea* individuals were grouped into three tree categories namely, perch 1 (10 cm  $\leq$  dhp < 30 cm); perch 2 (30 cm  $\leq$  dhp < 60 cm) and finally, futaies (dhp  $\geq 60$  cm). Using Ripley's K (r) function to characterize each category of trees and this to allow to verify the influence of each of them on the establishment of aggregates or not within two sites. By considering first, all the individuals with dhp  $\geq 10$  cm of *G. cedrata* within the site of Yangambi, we observed that they are distributed in a random way. But by categorizing them, one could detect that, the perches 2 present an aggregation at small scale of analysis (Cf Figure 5c) and which, is marked by

the distribution of the perches 1 and stands (Cf *Figures 5b and 4d*) while in Yoko, the perches 2 are distributed in a random way (Cf *Figure 6g*). But this distribution is masked by those of the perches 1 and the stands which are aggregated (Cf *Figures 5f and 5h*).

Using Ripley's K1.2 (r) function to test for independence, interaction and/or repulsion of different categories of trees, it could be largely observed that the positions of different categories of trees were independent of each other. However, some interactions were observed between tree categories (see *Figures 6d and 6e*) and repulsions (see *Figures 6b and 6e*) at small scales, although in most cases, the curves merge with the confidence intervals.

## CONCLUSION

The recurrent exploitation of plant species for the production of timber, handicrafts, and the various constructions of houses by the riparian populations and the installation of agricultural plots, have strongly disturbed the flora and woody vegetation of the forest of two reserves where the present study was carried out in the central basin in the province of Tshopo in DR Congo. In the Yangambi Biosphere Reserve, the management of this forest is based on the enrichment of certain zones by the creation of forest plantations based on silvicultural techniques, has strongly further contributed to the disturbance. All these anthropogenic actions have led to an impoverishment of the woody plant community.

The study showed that the density of *G. cedrata* populations is much higher in Yangambi than in Yoko and the same is true for the basal area value. Diameter averages showed that individuals are larger in Yangambi than in Yoko and the diametric structures are "stretched S", characteristic of good regeneration in both reserves. Spatial distribution is aggregated at Yoko while it is random at Yangambi. In general, the positions of perches and stands within the two reserves are independent each other; however, there is some dependence at small scales of analysis.

Based on the results of the present study, human activities constitute a real threat to the preservation of natural resources and the biodiversity in this forest formation. The overexploitation of such species has led to the scarcity of seed trees and, consequently, to a decrease in seed production causing a real problem of regeneration within this forest massif. In addition, a call on the leaders of the Democratic Republic of the Congo (DRC) to fully participate in the international approach of sustainable management of forest ecosystems and the fight against poverty through the legislation of the management of production forests, because one of its objectives is the sustainable development and the improvement of the living conditions of local communities, with respect of their rights to use biodiversity within the framework of a sustainable management of forest resources.

## REFERENCES

- Achard, F., & Blasco, F. (2010). Rythmes saisonniers de la végétation en Afrique de l'ouest par télédétection spatiale. In P. Lafrance et J. M. Dubois. Apports de la télédétection à la lutte contre la sécheresse. Collection Universités francophones Editions AUPELF-UREF et John Libbey Eurotext, Paris, p. 1-15.
- Achard, F., Eva, H. D., Stibig, H. J., Mayaux, P., Gallego, J., Richard, T. & Manlingreau, J. P. (2012). Determination of deforestation rates of the world's humid tropical forest. *Sciences*, 297 (5583), 999-1002.
- Adeito, M. S., Katusi, L., Konunga, M., & Nshimba, S. (2018). Caractérisation des structures diamétrique et spatiale de peuplement à *Guarea thompsonii* Hutch. & Sprague, dans les réserves de Yoko et Yangambi, Province de la Tshopo, RD Congo. *Afrique Science*, 14 (5), 136-146.
- Ashton, P. S., Gunatilleke, C., & Gunatilleke, I. (2005). Seedling survival and growth of four *Shorea* species in a Sri Lankan rainforest. *Journal of Tropical Ecology*, 11, 263-179.

- Baillie, I. C., Ashton, P. S., Court, M. N., Anderson, J. A. R., Fitzpatrick, E. A., & Tinsley, J. (1987). Site characteristics and the distribution of tree species in mixed dipterocarp forest on tertiary sediments in central Sarawak, Malaysia. *Journal of Ecology*, 3, 201-220.
- Bariteau, M. (1993). La régénération naturelle avant et après exploitation sur le dispositif d'expérimentation sylvicole de Paracou en Guyane française. Thèse de doctorat, ULP VI, 264 p.
- Barthes, B. (1991). Influence des caractères pédologiques sur la répartition spatiale de deux espèces du genre *Eperua* (Caesalpiniaceae) en forêt guyanaise. *Revue d'Ecologie (Terre et Vie)*, 46, 303-320.
- Besag J. (1977). Contribution to the discussion of Dr Ripley's paper. *Journal of the royal statistical society*, B, 39, 193-195.
- Boyemba, B. (2011). Ecologie de *Pericopsis elata* (Harms) Van Meeuwen (*Fabaceae*), arbre de forêt tropicale africaine à répartition agrégée. Thèse de doctorat, ULB, Bruxelles.
- Cabrera-Gaillard, C., & Gignoux, J. (1990). Répartitions spatiales et sylviculture en forêt guyanaise. CTFT, Kourou, 19 p.
- Chen, Z. S., Hsieh, C. F., Jiang, F. Y., Hsieh, T. H., & Sun, I. F. (1997). Relations of soil properties to topography and végétation in a subtropical rain forest in southern Taiwan. *Plant Ecology*, 132(2): 229-241.
- Cirad Forestry Department (2018). Bosse. [Internet] Tropix 5.0. <http://tropix.cirad.fr/ame/bosse.pdf>. February 2018.
- Clark, D. B., Clark, D., & Read, J. (1998). Edaphic variation and mesoscale distribution of tree species in a neotropical rain forest. *Journal of Ecology*, 86, 101-102.
- Collinet, F. (1997). Essai de regroupements des principales espèces structurantes d'une forêt dense humide d'après l'analyse de leur répartition spatiale (Forêt de Paracou-Guyane). Thèse de doctorat, Université Claude Bernard, Lyon I, 203 p
- Condit, R., Ashton, P. S., Baker, P., Bunyavejchewin, S., Gunatilleke, N., Gunatilleke, S., Hubbel, S. P., Foster, R. B., Itoh, A., Lafrankie, J. V., Lee, H. S., Losos, E., Manokatan, N., Sukumar, R., & Yamakuta, T. (2000). Spatial patterns in the distribution of tropical tree species. *Sciences*, 288, 1414-1418.
- De La Mensbrugge, G. (2017). La germination et les plantules des essences arborées de la forêt dense humide de la Côte d'Ivoire. Centre Technique Forestier Tropical, Nogent-sur-Marne, France. 389 pp.
- Debroux, L. (1998). L'aménagement des forêts tropicales fondé sur la gestion des populations d'arbres : l'exemple du Moabi (*Baillonella toxisperma* Pierre) dans la forêt du Dja, Cameroun. Thèse de doctorat, Faculté Universitaire des Sciences Agronomiques de Gembloux, Gembloux, 283 p.
- Degueret, A. (2002). Etude de la régénération des espèces commerciales dans les trouées d'exploitation au Gabon. Mémoire de Master, ENGREF, Montpellier, 92 p.
- Demarquez, B. (2000). Plan d'aménagement de la CFAD n° XX 2000-2030. Tome I : Aménagement C.E.B., Gabon, 221 p.
- Dibi, N., Kouakou, N., Egnankou, W., & Kouadio, A. (2018). Apport de la télédétection au suivi de la déforestation dans le Parc National de la Marahoué (Côte d'Ivoire). Teledetection, Editions des Archives Contemporaines / Editions scientifiques GB / Gordon and Breach Scientific Publishers, 8 (1) : 17-34.
- Doucet, J. L. (2003). L'alliance délicate de la gestion forestière et de la biodiversité dans les forêts du centre du Gabon. Thèse de doctorat, Faculté Universitaire des Sciences Agronomiques, Gembloux, 323 p.
- Doucet, J. L., MOUNGZI, A., & ISSEMBE, Y. (1996). Régénération naturelle dans la forêt

- des Abeilles (Gabon). Inventaires, écologies des espèces et impact de l'exploitation. Rapport interne, U.E.R. Sylviculture, Faculté Universitaire des Sciences Agronomiques, 127 p.
- Durrieu De Madron, L. (1989). Etude de l'environnement de l'Angélique sur le dispositif d'étude des peuplements naturels en forêt dense humide guyanaise. ENGREF-Kourou. Mémoire de stage, 37 p.
- Flores, O. (2005). Détermination de la régénération chez 15 espèces d'arbres tropicaux en forêt Guyanaise, les effets de l'environnement et de la délimitation par dispersion. Thèse de doctorat, Université de Montpellier II, Montpellier, 209 p.
- Forget, P. M. (1988). Dissémination et régénération naturelle de huit espèces d'arbres en forêt guyanaise. Thèse de doctorat, Université de Paris VI, 245.
- Forni, E. (1997). Types de forêts dans l'Est du Cameroun et étude de la structure diamétrique de quelques essences. Mémoire de DEA, Faculté Universitaire de Gembloux, Belgique, 65 p.
- Gartlan, S., Newbery, D. M., Thomas, D. W., & Waterman, P. G. (1986). The influence of topography and soil phosphorus on the vegetation of Korup Forest reserve, Cameroon. *Vegetation*, 65, 131-148.
- Gautier-Hion, A. D., Quris, J. M., Feer, R., Sourd, F., Decoux, C., Dubost, J.M., Emmons, G., Erard, L., Hecketsweiler, C., Mougazi, P. H., Roussillon, A. & Thiollay, C.J.M., (1985). Fruits characters as a basis of fruit choice, and seed dispersal by a tropical forest vertebrate community. *Oecologia*, 65, 324-337.
- Gorbert, A. (2002). Etude de la régénération naturelle de quelques essences commerciales au Gabon. Mémoire de DEA, Faculté Universitaire des Sciences Agronomiques Gembloux, 78 p.
- Goreaud, F. (2000). Apports de l'analyse de la structure spatiale en forêt tempérée à l'étude et la modélisation des peuplements complexes. Thèse de doctorat en Sciences forestières, ENGREF, 362 p.
- Gourlet-Fleury, S. (2000). Dispositif sylvicole expérimental de Paracou (Guyane française) : aperçu sur l'état de la dynamique des peuplements 13 ans après exploitation. Kourou (Guyane), France, Silvo lab, 242 p.
- Hall, J. S., Mckenna, J. J., Ashton, P. M. S., & Gregoire, T. G. (2004). Habitat characterizations underestimate the role of edaphic factors controlling the distribution of *Entandrophragma*. *Ecological Society of America, Ecology*, 85(8), 2171-2183.
- Harms, K. E., Condit, R., Hubbell, S. P., & Foster, R. (2001). Habitat associations of trees and shrubs in a 50-ha neotropical forest plot. *Journal of Ecology*, 89: 947-959.
- Hawthorne, W., & Jongkind, C. (2006). *Woody plants of western African forests: a guide to the forest trees, shrubs and lianes from Senegal to Ghana*. Kew Publishing, Royal Botanic Gardens, Kew, United Kingdom. 1023 pp
- Hawthorne, W. D. (1995). Ecological profiles of Ghanaian forest trees. Tropical Forestry Papers. Oxford Forestry Institute, Oxford, UK, 29 p
- He, F., Legende, P., & Lafrankie, J. V. (1997). Distribution patterns of tree species in Malaysian tropical rain forest. *Journal of Vegetation Science* 8, 105-114.
- Hubbell S. P., Foster, R. B., O'brian, S. T., Harms, K. E., Condit, R., Wechsler, B., Wright, S. J. & De Loo Lao, S., (1999). Light gap disturbances, recruitment limitation, and tree diversity in a neotropical forest. *Sciences*, 283: 554-557
- Hubbell, S. P. (1979). Tree dispersion, abundance and diversity in tropical dry forest. *Sciences*, 203, 1299-1309.
- Jiofack-Tafokou, R. B. (2018). *Guarea cedrata* (A.Chev.) Pellegr. In: Louppe, D., Oteng-Amoako, A.A. & Brink, M. (Editors).

- PROTA (Plant Resources of Tropical Africa / Ressources végétales de l'Afrique tropicale), Wageningen, Netherlands. Consulté le 3 octobre 2022.
- Jones, M. M., Tuomisto, H., Clark, D. B., & Olivas, P. (2006). Effects of mesoscale environmental heterogeneity and dispersal limitation on floristic variation in rain forest ferns. *Journal of Ecology*, 94 (1), 181-195.
- Katusi, L. (2015). Ecologie de *Guarea cedrata* (A. Chev.) Pellegr. et *Guarea thompsonii* Sprague & Hutch. dans les forêts des environs de Kisangani : Cas des Réserves forestières de Yoko et Biosphère de Yangambi (Province Orientale, RDC). Thèse, Faculté des Sciences/Université de Kisangani, 136 p
- Katusi, L. R., Mangambu, M. J. D., Aruna, S. J., & Nshimba, S. M. H. (2021). Etudes phénologiques et dispersions des fruits de *Guarea cedrata* et *Guarea thompsonii* (Meliaceae) dans les forêts semi-caducifoliées du massif forestier de Kisangani (République Démocratique du Congo). *Geo-Eco-Trop.*, (45), 145-159.
- Katusi, L., Nshimba, S., Lituka, L., & Mangambu, M. (2022a). Analyse de la régénération naturelle dans le Bassin du Congo : cas de *Guarea cedrata* (A. Chev.) Pellegr. dans les massifs forestiers de la cuvette centrale de Yoko et de Yangambi (Tshopo, RD. Congo). *Geo-Eco-Trop.*, 46(3): 389-402
- Katusi, L., Fundiko, C., Nshimba, S., & Mangambu, M. (2022c). Influence of toposequence and Marantaceae cover on the spatial distribution of *Guarea cedrata* (A. Chev.) Pellegr. and *Guarea thompsonii* Sprague & Hutch. in the central basin forests around Kisangani (Tshopo, DR Congo). *Journal of Applied Biosciences*, 180, 18851–18866 <https://doi.org/10.35759/JABs.180.6>
- Katusi, L., Likaka, M. S., Nshimba, S., & Mangambu, M. (2022b). Population dynamics of *Guarea cedrata* (A. Chev.) Pellegr. and *Guarea thompsonii* Sprague & Hutch. in the semi-deciduous forests of the forest massif of the Yoko Forest Reserve (Central Cuvette, DR. Congo). *Geo-Eco-Trop.*, 46 (3), 373-387.
- Kouadio, L. (2008). Mesures sylvicoles en vue d'améliorer la gestion des populations d'essences forestières commerciales de l'Est du Cameroun. Thèse de doctorant, Faculté Universitaire des Sciences Agronomiques Gembloux, 253p. + annexes.
- Koukou, K. (1994). Evolution spatiale des agrégats d'Angélique de Guyane (*Dicorynia guianensis*, Caesalpinaceae) sur le dispositif d'étude « Forêt naturelle » de Paracou en Guyane française. *Acta botanica Gallica*, 141(3): 351-359.
- Lomba, B-L. (2011). Systèmes d'agrégation et structures diamétriques en fonction des températures de quelques essences dans les dispositifs permanents de Yoko et Biaro (Ubundu, province orientale RD. Congo). Thèse de doctorant, FS/UNIKIS, 261 p
- Loubry, D. (1993). Les paradoxes de l'Angélique (*Dicorynia guianensis* Amshoff) : dissémination et parasitisme des graines avant dispersion chez un arbre anémochore de la forêt guyanaise. *Rev. Ecol. (Terre Vie)*, 48 : 353-363.
- Loubry, D. (1994). Déterminisme du comportement phénologique des arbres en forêt tropicale humide de Guyane française (5°lat, N). Thèse de Doctorat., Université Pierre et Marie Curie. Paris VI: 566.
- Mangambu, M. (2002). Etude de peuplement du sous-bois dans la partie Nord de la Réserve forestière de Yoko, Ubundu. TFE, FS/UNIKIS, 55 p + annexes.
- Marc, H. (2000). Etude des mécanismes de régénération naturelle de trois essences de la famille des Caesalpiacées en forêt tropicale gabonaise à savoir l'Ekop (*Tetraberlinia bifoliata*), le Beli (*Paraberlinia bifoliata*) et l'Ovangkol (*Guibourtia ehie*). Mémoire de DEA, Faculté Universitaire des Sciences Agronomiques Gembloux, 78 p.

- Menga, M. P. (2011). Ecologie des peuplements naturels de *Millettia laurentii* De Wild. (Wenge) dans la région du lac Maï-Ndombe, en RD Congo. Thèse de doctorat, FS/UNIKIN, 190 p + annexes
- Menga, P., Bayol, N., Nas, R., & Fayolle, A. (2012). Phénologie et diamètre de fructification du wengé, *Millettia laurentii* De Wild. : Implications pour la gestion. *Bois et Forêts des Tropiques*, 312(2), 31-41.
- Menut, C., Lamaty, G., Bessiere, J. M., Seuleiman, A. M., Fendero, P., Maidou, E., & Denamganai, J. (1995). Aromatic plants of tropical central Africa. XXI. Chemical composition of bark essential oil of *Guarea cedrata* (A. Chev.) Pellegr. from Central African Republic. *Journal of Essential Oil Research*, 7(2): 207–209.
- Neuwinger, H. D. (2018). African traditional medicine: a dictionary of plant use and applications. Medpharm Scientific, Stuttgart, Germany.
- Newbery, D. M., Gartlan, J. S., Mckey, D. B., & Waterman, P. G. (1986). The influence of drainage and soil phosphorus on the vegetation of Douala-Edea Forest Reserve, Cameroon. *Vegetation*, 65, 149-162.
- Oldeman, R. A. A., & Van Dijk, J. (1991). Diagnosis of the temperament of tropical rain forest trees. Rain forest regeneration and management. Gomez-Pompa A., Whitmore T.C. & Hadley M., Eds. Paris, UNESCO and the Parthenon publishing group., 6: 21–65.
- Oresta(De), H., Charles-Dominique, C., Arard, C., & Prevost, M. F. (1984). Zoochorie et premiers stades de la régénération naturelle après coupe en forêt guyanaise. *Revue d'Ecologie (Terre et Vie)*, 39 : 369-400.
- Pascal, J. P., & Pelissier, R. (1995). Structure and floristic composition of tropical evergreen forest in south-west India. *Journal of Tropical Ecology*, 12, 191-214.
- Pelissier, R., & Goreaud, F. (2001). A practical approach to the study of spatial structure in simple cases of heterogeneous vegetation. *Journal of Vegetation Science*, 12(1), 99-108.
- Picard, N. (2008). Manuel de référence pour l'installation de dispositifs permanents en forêt de production dans le Bassin du Congo. CIRAD, Département Environnements et Sociétés, UPR Dynamique des forêts naturelles, Montpellier, France, 265 p
- Puig, H., Forget, P. M., & Et Sist, P. (1989). Dissémination et régénération de quelques arbres en forêt tropicale guyanaise. Bulletin de la Société Française, 136. *Actualité Botanique*, (3/4): 119-131.
- Ribbens, E., Silander, J. A., & Paul, S. W. (1994). Seedling recruitment in forests: calibrating models to predict patterns of tree seedling dispersion. *Ecology*, 75 (6): 1794-1806
- Schnell, R. (1971). Introduction à la phytogéographie des pays tropicaux. Ed. Gauthier-Villars 55, quai des grands-augustins, Paris 6è, Vol II, 951 p
- Siepel, A., Poorter, L., & Hawthorne, W. D. (2004). Ecological profiles of large timber species. In L. Poorter, F. Bongers, F. N. Kouamé, & W. D. Hawthorne, (Eds). *Biodiversity of West African forests. An ecological atlas of woody plant species*. CABI Publishing, CAB International, Wallingford, United Kingdom. pp. 391–445.
- Traissac, M. S. (2005). Dynamique spatiale de *Vouacapoua americana* (Aublet), arbre de la forêt tropicale humide à répartition agrégée. Thèse de doctorat, Université Claude Bernard-Lyon I, 217 p
- Vandenput, R. (1981). Les principales cultures en Afrique centrale. Tournai : édit. Lesaffre, 458 p.
- Wilks, C., & Issembe, Y. (2000). Les arbres de la Guinée Equatoriale : Guide pratique d'identification : région continentale. Projet CUREF, Bata, Guinée Equatoriale. 546 p.